



MADE IN JAPAN



# ELEMAX

Power of Next Generation

# PRODUCTS

## Compact Diesel Type(5.5 - 10.2kVA)

### Diesel Generators

#### SHX8000Di (7.0kVA) SHX12000Di (10.2kVA)



SHX8000Di		SHX12000Di	
Rated Output 7.0 kVA (50/60Hz)	Fuel Consumption 1.6 l/h (50% Load)	Rated Output 10.2 kVA (50/60Hz)	Fuel Consumption 2.3 l/h (50% Load)

#### FEATURES

##### - High Performance Diesel Engine

Yanmar 2TNV70-ASG Compliant with EPA TIER 4 FINAL  
Variable 2300 - 3400 rpm contributes to reduced fuel consumption and minimizing noise levels

##### - SPECIAL INVERTER for Pure Sine Wave Output <sup>1</sup>

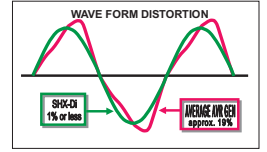
High quality, pure sine wave electrical output is ideal for sensitive equipment like PC and TVs.

##### - SAWAFUJI PMA (Permanent Magnet Alternator) <sup>2</sup>

The PMA incorporates SAWAFUJI's state of the art winding technology and is 60% smaller than conventional alternators.

##### - SMART Multi LED Display <sup>3</sup>

Shows rpm, cumulative running hours, and error messages for self-diagnostics.



\*1: Inverter



\*2: PMA



\*3: Control Panel

#### SH07D (5.5 - 6.5kVA)



#### FEATURES

##### - Best-in-the-industry Engine

Kubota Z482 (SH07D) / D722 (SH11D)  
The life of the genset is second to none with sufficient power exceeding your expectations.

##### - Emergency Auto Shutdown

Stops the engine automatically when it lacks enough oil or if water temperature overheats or output terminal cover is opened..

##### - Connectable with ATS (Automatic Transfer Switch)

When connected with ATS, the generator auto-starts when the utility power fails.

SH07D			SH11D		
Rated Output 5.5 kVA (50Hz)	Rated Output 6.5 kVA (60Hz)	Fuel Consumption 2.4 l/h (50Hz 100% Load)	Rated Output 8.0 kVA (50Hz)	Rated Output 10 kVA (60Hz)	Fuel Consumption 3.2 l/h (50Hz 100% Load)



Type R



Type LD

LINE UP SH07D/SH11D

## Heavy Duty Gasoline Type(8.5 - 11.8kVA)

### Gasoline Generators

#### SH11000 (8.5 - 9.5kVA)



#### FEATURES

##### - Powerful Gasoline Engine

Honda GX630 15.1kW Air-Cooled OHV V-TWIN Engine

##### - Control Panel

Easy to see and easy operation.  
Standard features:V-meter, Hour-meter, Pilot Lamp

LINE UP SH11000/SHT11500

SH11000		SH11500	
Rated Output 8.5 kVA (50Hz)	Rated Output 9.5 kVA (60Hz)	Rated Output 10 kVA (50Hz)	Rated Output 11.5 kVA (60Hz)
Continuous Operating Hours 6.5 h (50Hz 100% Load)	Continuous Operating Hours 6.5 h (50Hz 100% Load)	Continuous Operating Hours 6.5 h (50Hz 100% Load)	Three Phase 3



Single Phase



Three Phase

# Heavy Duty Diesel Type (12 - 22kVA)

SPEC. 5P

## SH15D (12 - 13kVA)



### LINE UP SH15D/SHT15D/SHT17D

SH15D		SHT15D/SHT17D	
Rated Output <b>12 kVA</b> (50Hz)	Rated Output <b>13 kVA</b> (60Hz)	Rated Output <b>15 kVA</b> (50Hz)	Rated Output <b>16.3 kVA</b> (60Hz)
Fuel Consumption <b>4.9 l/h</b> (100% Load)	Fuel Consumption <b>4.8 l/h</b> (50Hz 100% Load)	Three Phase <b>3</b>	

### FEATURES

#### -High Performance Diesel Engine <sup>\*1</sup>

Kubota D1005  
Vertical water-cooled,4-cycle diesel engine  
The D1005 diesel engines ensure greater power,more efficient combustion,and cleaner emissions.

#### -Control Panel <sup>\*2</sup>

Easy to see and easy operation.

#### -Automatic Air Bleeding

This system reduces troublesome maintenance procedures by automatically removing air from the fuel line.

#### -Safety System

Emergency unit detects abnormally low oil pressure or high coolant temperature and stops engine automatically to prevent damage.

#### -Large Capacity Fuel Tank

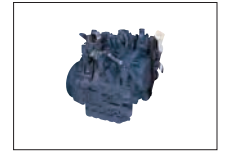
The larger capacity fuel tank enables longer periods of continuous operation.

#### -One Side Maintenance

Oil,fuel,water,and filters are all located on one side for easy maintenance.

#### -ATS(AMF)Terminals

ATS terminals are standard equipment.



\*1: Kubota D1005



\*2: Control Panel

## SHT25D (20 - 22kVA)



### LINE UP SH20D/SHT25D

### FEATURES

#### - High Performance Diesel Engine <sup>\*3</sup>

Kubota V2203-B

#### - Brushless Alternator STAMFORD PI144D

#### - Control Panel <sup>\*4</sup>

#### - Automatic Air Bleeding

#### - Safety System

#### - Large Capacity Fuel Tank

#### - One Side Maintenance

#### - ATS(AMF) Terminals

SH20D		SHT25D	
Rated Output <b>19 kVA</b> (60Hz)	Fuel Consumption <b>6.6 l/h</b> (100% Load)	Rated Output <b>20 kVA</b> (50Hz)	Rated Output <b>22 kVA</b> (60Hz)
Fuel Consumption <b>5.4 l/h</b> (50Hz 100% Load)		Three Phase <b>3</b>	



\*3: Kubota V2203-B



\*4: Control Panel

SPEC. 6P

## SH13000 (10 - 11.8kVA)



### FEATURES

#### - More Powerful Gasoline Engine

Robin EH72-2DS 17.2kW Air-Cooled OHV V-TWIN Engine

#### - Control Panel

Easy to see and easy operation.

Standard features:

V-meter, Hour-meter, Pilot Lamp

### LINE UP SH13000/SHT15000

SH13000			SHT15000		
Rated Output <b>10 kVA</b> (50Hz)	Rated Output <b>11.8 kVA</b> (60Hz)	Continuous Operating Hours <b>5.0 h</b> (50Hz 100% Load)	Rated Output <b>12 kVA</b> (50Hz)	Continuous Operating Hours <b>5.0 h</b> (50Hz 100% Load)	Three Phase <b>3</b>



Single Phase



Three Phase

# PRODUCTS

## EX Series(2.2 - 6.5kVA)

Gasoline Generators

SPEC. 5P

### SH3200EX



Rated Output  
2.2 kVA  
(50Hz)

Rated Output  
2.5 kVA  
(60Hz)

Continuous  
Operating Hours  
14 h  
(50Hz 100% Load)

#### FEATURES

##### - Honda OHV 4-stroke Engine

Provides high power, outstanding fuel economy. Fuel consumption is nearly 30% less than comparable side-valve engines.

##### - Automatic Voltage Regulator(AVR)

ELEMAX's AVR smooths power output fluctuations to enable operation of sensitive electronic equipment.

##### - Large Fuel Tank

17 liter fuel tank for SH3200EX, SH3900EX and 28 liter fuel tank for upper model realize exceptionally long operating hours.

##### - 10% to 25% Increased Output Power Compared to DX series<sup>\*1</sup>

Rated output power has been increased from 10 to 25% compared to DX series. This power up is provided by newly designed Sawafuji square core alternator.

##### - New Designed Control Panel<sup>\*2</sup>

Not only new attractive outlook design, safety and water resistance are also improved.

##### - Improved Frame Design

Welded upper bar and widen diameter of the frame pipe are significantly improved the outlook image and protect the machine from rough handling and damage.

### SH7600EXS



Rated Output  
5.6 kVA  
(50Hz)

Rated Output  
6.5 kVA  
(60Hz)

Continuous  
Operating Hours  
8.5 h  
(50Hz 100% Load)



**LINE UP** SH3200EX/SH3900EX/SH4600EX/  
SH5300EX/SH6500EX(S)/SH7600EX(S)

## STANDARD Series(1.3 - 4.5kVA)

Gasoline Generators

SPEC. 6P

### SH2900

#### LINE UP

SH1900  
SH2900  
SH4000  
SH5000  
SH6000

Rated Output  
2.0 kVA  
(50Hz)

Rated Output  
2.3 kVA  
(60Hz)

Continuous  
Operating Hours  
3.0 h  
(50Hz 100% Load)



#### FEATURES

- Honda OHV 4-stroke Engine
- Saddle type Control Box with 2 AC Outlets
- Compact, Light Weight and Solid

## WELDER Generator (140A 26V)

Gasoline Generators

SPEC. 6P

### SHW190

Generator  
2.0 kVA  
(50Hz)

Welder (DC)  
140A/26V

Continuous  
Operating Hours  
6.2 h (AC)  
(50Hz 100% Load)



#### FEATURES

- Honda OHV 4-stroke Engine
- 190amps Maximum DC Power for Welding
- 17 liter Large Capacity Fuel Tank with Fuel Gauge
- Compact and Light Weight
- Stable-Arc 6-Phase Half Wave Current for Welding

# SHX Series(900 - 1500W)

## Portable Gasoline Generators

SPEC. 5P

### SHX1000



**Rated Output**  
**900 w**  
 (50/60Hz)

**Dry Weight**  
**13.6 kg**  
 (R.S.L. Type)

**Continuous Operating Hours**  
**5.5 h**  
 (100% Load)

#### FEATURES

##### -Advanced Technology<sup>\*3</sup>

Newly designed Multi-pole Alternator and high speed engine dramatically reduced the size and weight.

##### -Honda 4-stroke Engine

Honda multi purpose engine has been industry standard for reliability and durability in the world. Also guaranteed with just a light pull on the recoil starter.

##### -Long Operating Hours

Large fuel tank allows efficient work without refueling.

##### -Portability

These models are especially easy to carry.

##### -Lower Sound Level(Silent and Power mode)

This unique designed silent mode for SHX1000 provides extremely lower sound level with 3/4 load. Just in case to take full load, only to change to Power mode.

##### -Compact & Light Weight

The SHX1000 weighs only 13.6kg, The SHX2000 weighs only 21kg, less than half of the weight of similar capacity conventional generator.

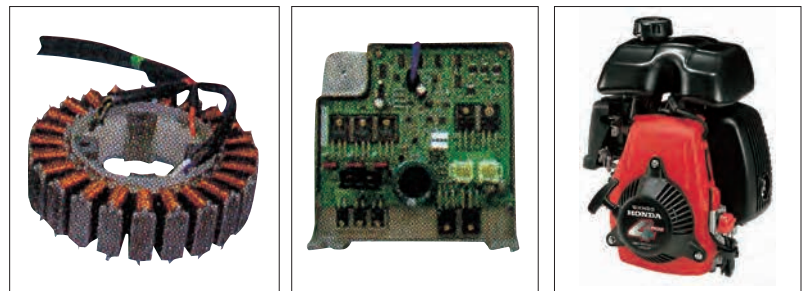
### SHX2000



**Rated Output**  
**1500 w**  
 (50/60Hz)

**Dry Weight**  
**21 kg**  
 (R.S.L. Type)

**Continuous Operating Hours**  
**7.0 h**  
 (100% Load)



\*3



without it...it's

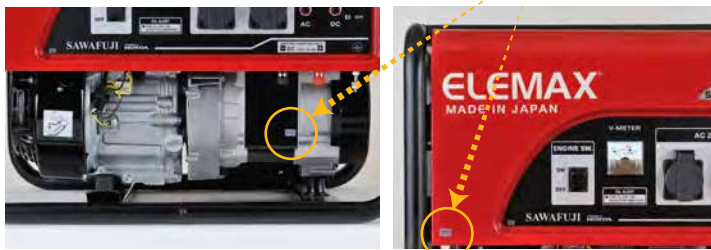
## How to Authenticate ELEMEX Generators

**FAKE!**

#### Check Point

#### 1 -TRUSTGRAM-

Make sure that the security label of "TRUSTGRAM" is put on the product body.



Without TRUSTGRAM...

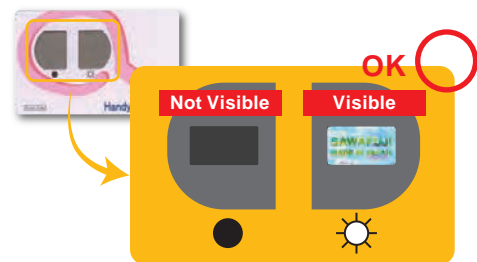


**FAKE!**

#### Check Point

#### 2 -HOLOGRAM-

Make sure that the following change is visible through the "VIEWER"



Window	●	☀
OK	Not Visible	Visible
FAKE	Not Visible	Not Visible
FAKE	Visible	Visible
FAKE	Visible	Not Visible

# SPECIFICATIONS

## EX Series

Gasoline Generators				3P FEATURES															
Models				SH3200EX		SH3900EX		SH4600EX		SH5300EX		SH6500EX		SH7600EX					
Type				R-type: 220V(50Hz), S-type: 220V(60Hz), D-type: 110/220V(60Hz), LD-type: 127/240V(60Hz)															
Generator				50, 60															
Frequency (Hz)				Self-Exciting, 2-pole, Field Rotating Type															
Type				AVR															
Voltage Regulation System				Single															
Phase				Single															
AC Output (KVA)				Rated Power (KVA)		50Hz		2.2		2.8		3.2		3.8		5.0		5.6	
				Maximum Power (KVA)		50Hz		2.5		3.2		3.8		4.4		5.6		6.5	
				Rated Voltage (V)		50Hz		2.6		3.3		4.0		4.7		5.8		6.5	
				Rated Voltage (V)		60Hz		3.2		3.9		4.6		5.3		6.5		7.6	
DC Output (V-A)				R:220(50Hz), S:220(60Hz), D:110/220(60Hz), LD:127/240(60Hz)															
Rated Power Factor (cos φ)				1.0															
Engine				Honda															
Maker				Honda															
Models				GX160		GX200		GX240		GX270		GX340		GX390					
Displacement (CC)				163		196		270		270		389		389					
Net Power (kW)				3.600rpm		3.6		4.1		5.9		6.3		8.0		8.7			
Ignition System				Transistor															
Oil Alert System				YES															
Starting System				Recoil															
L x W x H (mm)				623 x 438 x 491				708 x 548 x 493											
Dry Weight (kg)				44		46		63		68		75		78					
Fuel Tank Capacity (litres)				17				28											
Sound Level (dB) [dB(A)/7m] (0% load)				50Hz		64		65		63		70		71		73			
				60Hz		68		69		71		72		75		76			
				50Hz		14		10		14		12		10		8.5			
				60Hz		12		8.8		11		10		7.9		7.2			

## SHX Series

Portable Gasoline Generators				4P FEATURES															
Models				SHX 1000				SHX 2000											
Type				R		G		S		L		R		G		S		L	
Generator				50		60		60		4500									
Frequency (Hz)				5800/4100(Power Mode/Silent Mode)															
Engine Speed (rpm)				Square-Wave															
Waveform				1000		1900		1700		1900									
AC Output				Maximum Power (W)		900		1500		1900									
				Rated Power (W)		220		230		220		230		220		120			
				Rated Voltage (V)		220		230		220		230		220		120			
DC Output				Only for Charging 12V Automotive Batteries.															
				Maximum Charging Output = 8.3/4.2 A(Power Mode/Silent Mode) Maximum charging output = 8.3A															
Insulation Class				B															
Engine				Honda															
Maker				Honda															
Models				GXH50								GX100							
Type				Air Cooled OHV 4-stroke Gasoline								Air Cooled OHC 4-stroke Gasoline							
Displacement (CC)				49.4								98.5							
L x W x H (mm)				465 x 265 x 380								560 x 340 x 415							
Dry Weight (kg)				13.6		14.0		13.6		13.6		21.0		22.0		21.0		21.0	
Fuel Tank Capacity(litres)				3.8								7.7							
Sound Level				[dB(A)/7m]		58 (50% load)		89 (75% load)		63 (50% load)		93 (75% load)							
				[dB Lwa]		5.5 (100% load)		8.6 (50% load)		7 (100% load)									
Continuous Operating Hours (h)				5.5 (100% load) 8.6 (50% load)								7 (100% load)							
Others				LED															
Pilot Lamp				LED															
Power Indicator				YES															
Oil Alert System				Interlocking with Fuel Cock															
Engine Stop				Rocker Switch															
AC				Output		Plug Socket x 1		Control Circuit		Plug Socket x 2									
				Protective Device		Terminal		Thermal Type Circuit Breaker											
DC				Output		Terminal		Thermal Type Circuit Breaker											
				Protective Device		Terminal		Thermal Type Circuit Breaker											

## HEAVY DUTY Type

Diesel Generators				1-2P FEATURES																	
Models				SH07D		SH11D		SH15D		SHT15D		SHT17D		SH20D		SHT25D					
Type				R		LD		R		D		R		S		LD		R		S	
Generator				50		60		50		60		50		60		60		50		60	
Frequency (Hz)				Self-exciting, 2-pole, Field Rotating Type																	
Type				Single																	
Phase				AVR																	
Voltage Regulation System				AVR																	
AC Output				Rated Power (KVA)		5.5		8.0		12		15		-		20					
				60Hz		6.5		10.0		13		16.3		19		22					
				Rated Voltage (V)		220		120/240		220		120/240		Single Phase : 220		120/240		Single Phase : 220		Three Phase : 380	
				Rated Power Factor (cos φ)		1.0		1.0		0.8		1.0		1.0		0.8					
Engine				Kubota																	
Maker				Kubota																	
Models				Z482		D722		D1005		V2203-B											
Displacement (CC)				479		719		1001		2197											
Maximum Horse Power (PS)				8.1(3,600rpm)		12.2(3,600rpm)		26(3,600rpm)		32.2(1,800rpm)											
Starting System				Electric Starter																	
L x W x H (mm)				1066 x 618 x 698		1281 x 618 x 698		1474 x 698 x 869		1660 x 690 x 900											
Dry Weight (Kg)				235		290		387		540											
Fuel Tank Capacity (litres)				28		29		53		72											
Sound Level				50Hz		66.5		68.0		69.5		69.5		72.0		68.0		72.0			
				60Hz		67.5		69.0		72.8		72.8		72.0		72.0					
Continuous Operating Hours (h)				50Hz		12.0		8.5		10.8		11.1		17.6 *		-		-			
				60Hz		10.0		7.0		9.0		9.5		14.3 *		15.2 *					
Others				YES																	
Volt Meter				NO																	
Ampere Meter				NO		YES		NO		YES		NO		YES							
Hour Meter				YES																	
Warning Lights				Indicator Lights (4-conditions)																	
Output				R: Plug Socket x 2,		LD: Plug Socket x 2		Plug Socket x 2		Terminal & Socket		Terminal									
ATS Terminals				YES																	

\* 75% load

## SHX Series

Diesel Generators				1P FEATURES									
Models				SHX8000Di		SHX12000Di							
Type				R		LD		R		LD			
Generator				50		60		50		60			
Frequency (Hz)				Permanent Magnet, Multi-Pole Alternator									
Type				Single									
Phase				Inverter									
Voltage Regulation System				Pure Sine wave									
Waveform				Maximum power (KVA/KW)		7.5		11.0					
				Rated power (KVA/KW)		7.0		10.2					
Output				Voltage(V)		220		120/240		220		120/240	
				Current (A)		31.8		2 x 29.2-29.2		46.4		2 x 42.5-42.5	
				Rated Power Factor (cos φ)		1.0							
Engine				YANMAR									
Maker				YANMAR									
Model				2TNV70-ASG		3TNM68-ASG							
Displacement (L)				0.570		0.784							
Rated output (kW/rpm)				9.3/3600		13.8/3600							
Engine speed(r rpm)				2300 - 3400, Variable									
Starting System				Electric Starter									
Fuel				Diesel Fuel (BS2869A1or equivalent)									
Battery (5HR)				12 - 36 (46B24L)									
L x W x H (mm)				1080 x 647 x 686				1184 x 670 x 770					
Dry Weight (kg)				257				278					
Fuel Tank Capacity				29.0				40.7					
Sound Level				25% load		63.5		64.0					
				75% load		65.5		66.0					
				100% load		67.5		68.0					
Fuel consumption (litres)				25% load		1.1		1.6					
				50% load		1.6		2.3					
				75% load		2.2		3.2					
				100% load		3.0		4.3					
Others				YES									
Volt Meter				YES (LED Display)									
Hour Meter				YES (LED Display)									
Warning Lights				YES (LED Display)									
Output				R Type: Plug Socket x 3, LD Type: Plug Socket x 6									
ATS Terminal				YES									

# HEAVY DUTY Type

Gasoline Generators				1-2P FEATURES						
Models				SH11000		SHT11500		SH13000		SHT15000
Type				R	LD	R	S	R	LD	R
Generator	Frequency (Hz)			50	60	50	60	50	60	50
	Type			Self-exciting, 2-pole, Field Rotating Type						
	Voltage Regulation System			AVR						
	Phase			Single		Three		Single		Three
	AC Output (KVA)	Rated Power (KVA)	50Hz	8.5	-	10.0	-	10.0	-	12.0
			60Hz	-	9.5	-	11.5	-	11.8	-
		Maximum Power (KVA)	50Hz	10.0	-	11.5	-	11.0	-	-
		60Hz	-	11.0	-	13.0	-	13.0	13.2	
	Rated Voltage (V)		220	120/240	220/380	220/380	220	120/240	220/380	
Rated Power Factor (cos φ)			1.0		0.8		1.0		0.8	
Engine	Maker			Honda				Robin		
	Models			GX630				EH72-2DS		
	Displacement (CC)			688				720		
	Net Power (kW)			15.5				17.2		
	Ignition System			CDI						
	Oil Alert System			YES						
Others	Starting System			Electric Starter						
	L x W x H (mm)			925 x 665 x 636/804 (with wheel)						
	Dry Weight (kg)	without wheel		160				175		
		with wheel		167				183		
	Fuel Tank Capacity (liters)			38						
	Sound Level [dB(A)/7m] (0% load)	50Hz		74				76.0	-	76.0
60Hz							-	78.0	-	
Continuous Operating Hours (h)	50Hz		7.0	-	7.0	-	5.5	-	5.5	
	60Hz		-	6.2	-	6.2	-	4.5	-	
Cooling System			Forced Air							
Engine Oil Refill Capacity (liters)			1.8 (with filter replaced) / 1.5 (without filter replaced)				1.55L (inclusive of those in oil filter)			

# STANDARD Series

Gasoline Generators				3P FEATURES					
Models				SH 1900	SH 2900	SH 4000	SH 5000	SH 6000	
Type				R-type; 220V(50Hz), S-type; 220V(60Hz), L-type; 120V(60Hz)					
Generator	Frequency (Hz)			50, 60					
	Type			Self-Exciting, 2-pole, Field Rotating Type					
	Voltage Regulation System			AVR					
	Phase			Single					
	AC Output (KVA)	Rated Power (KVA)	50Hz	1.3	2.0	2.7	3.2	4.0	
			60Hz	1.5	2.3	3.0	3.6	4.5	
		Maximum Power (KVA)	50Hz	1.6	2.4	3.7	4.5	5.5	
		60Hz	1.9	2.9	4.1	5.0	6.0		
	Rated Voltage (V)		220, 120						
Rated Power Factor (cos φ)			1.0						
Engine	Maker			Honda					
	Models			GX120	GX160	GX240	GX270	GX340	
	Displacement (CC)			118	163	270	270	389	
	Net Power (kW)			3,600rpm	2.6	3.6	5.9	6.3	8.0
	Ignition System			Transistor		CDI			
	Oil Alert System			YES					
Others	Starting System			Recoil					
	L x W x H (mm)			560 x 422 x 422		605 x 495 x 490		655 x 511 x 490	
	Dry Weight (kg)			29	34	51	54	65	
	Fuel Tank Capacity (liters)			2.5	3.6	6.0	6.0	7.0	
	Sound Level [dB(A)/7m] (0% load)	50Hz		69	70	72	72	73	
		60Hz		71	72	74	75	76	
Continuous Operating Hours (h)	50Hz		3.1	3.0	3.6	3.0	2.8		
	60Hz		2.1	2.5	3.1	2.7	2.3		

# WELDER Generator

Gasoline Welder Generator				3-4P FEATURES				
Models				SHW190				
Type				R	S	L		
Generator	Frequency (Hz)			50	60			
	Type			2-pole, Field Rotating Type				
	Phase			Single				
	AC Output (KVA)	Rated Power (KVA)	50Hz	2.0	-	4.0		
			60Hz	-	3.0	110		
	Rated Voltage (V)		220					
Rated Power Factor (cos φ)			1.0					
Welder	Type			2-pole, Field Rotating Type				
	Rectifier Type			Six Phase Half Wave Rectifier				
	Rated Output			3,700rpm	140A 26V			
	Current Control Range (A)			50 - 190				
	Rated Duty Cycle (%)			50				
	Welding Rod			2.6 to 5.0 mm dia.				
Engine	Maker			Honda				
	Models			GX390				
	Displacement (CC)			389				
	Net Power (kW)			3,600rpm	8.7			
	Ignition System			CDI				
	Oil Alert System			YES				
Others	Starting System			Recoil (OP;Electric)				
	L x W x H (mm)			679 x 511 x 490				
	Dry Weight (kg)			90				
	Fuel Tank Capacity (liters)			17				
	Sound Level [dB(A)/7m] (0% load)	50Hz		75				
		60Hz		75				
Continuous Operating Hours (h) (AC 100%)	50Hz		6.2					
	60Hz		5.2					

\*1 : Only R,S type  
\*2 : only Electric starter type

	Portable Gasoline Generators				Gasoline Generators				WELDER
	SHX Series				EX Series				
Standard Accessory	SHX1000	SHX2000	SH3200EX	SH3900EX	SH4600EX	SH5300EX	SH6500EX	SH7600EX	SHW190
Owner's Manual	○	○	○	○	○	○	○	○	○
Plug	*1	*1	○	○	○	○	○	○	○
Spark plug	-	-	○	○	○	○	○	○	○
Wrench	○	○	○	○	○	○	○	○	○
Tool kit	-	-	-	-	-	-	-	-	-
Slow Blow Fuse	-	-	-	-	-	-	-	-	-
Battery	-	-	-	-	-	-	-	-	-
Band hook for battery	-	-	-	-	-	-	*2	*2	*2
Optional Equipment	SHX1000	SHX2000	SH3200EX	SH3900EX	SH4600EX	SH5300EX	SH6500EX	SH7600EX	SHW190
Electric Starter	-	-	-	-	-	-	OPT	OPT	OPT
4-wheel kit	-	-	-	-	-	OPT	OPT	OPT	OPT
Gasoline Generators									
	STANDARD Series				HEAVY DUTY Type				
	SH1900	SH2900	SH4000	SH5000	SH6000	SH11000	SHT11500	SH13000	SHT15000
Owner's Manual	○	○	○	○	○	○	○	○	○
Plug	○	○	○	○	○	○	○	○	○
Spark plug	○	○	○	○	○	○	○	○	○
Wrench	○	○	○	○	○	○	○	○	○
Tool kit	-	-	-	-	-	-	-	-	-
Slow Blow Fuse	-	-	-	-	-	-	-	-	-
Battery	-	-	-	-	-	○	○	○	○
Band hook for battery	-	-	-	-	-	○	○	○	○
Optional Equipment	SH1900	SH2900	SH4000	SH5000	SH6000	SH11000	SHT11500	SH13000	SHT15000
Electric Starter	-	-	-	-	-	STD	STD	STD	STD
4-wheel kit	-	-	-	-	-	STD	STD	STD	STD
Diesel Generators									
	HEAVY DUTY Type								
	SH07D	SH11D	SHX8000Di	SHX12000Di	SH15D	SHT15D	SHT17D	SH20D	SHT25D
Owner's Manual	○	○	○	○	○	○	○	○	○
Plug	○	○	○	○	○	○	○	○	○
Spark plug	-	-	○	○	○	○	○	○	○
Wrench	-	-	○	○	○	○	○	○	○
Tool kit	-	-	○	○	-	-	-	-	-
Slow Blow Fuse	○	○	○	○	○	○	○	○	○
Battery	○	○	○	○	○	○	○	○	○
Band hook for battery	○	○	○	○	-	-	-	-	-
Optional Equipment	SH07D	SH11D	SHX8000Di	SHX12000Di	SH15D	SHT15D	SHT17D	SH20D	SHT25D
Electric Starter	STD	STD	STD	STD	STD	STD	STD	STD	STD
4-wheel kit	-	-	-	-	OPT	OPT	-	-	-



**SAWAFUJI GENERATORS**  
Proudly Made in Japan

## **SAWAFUJI ELECTRIC CO., LTD.**

3, Nittahayakawa-cho, Ota-City,  
Gunma 370-0344 JAPAN  
PHONE: +81-276-56-7139  
FAX: +81-276-56-6075  
URL: <http://www.elemax.jp>

